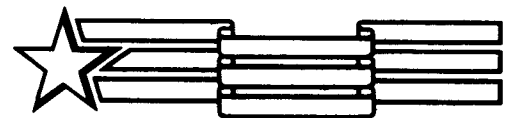


Ingersoll

**HYDRAULIC SPECIFICATIONS
6018 LOADER-BACKHOE
Service Manual 8-56630**



QUALITY IN THE AMERICAN TRADITION

Ingersoll Equipment Co., Inc.

Winneconne, Wisconsin 54986-9576

casecoltingersoll.com

TABLE OF CONTENTS

Specifications -----	Page 2
Loader Oil Flow -----	Page 3
Loader-Backhoe Oil Flow -----	Page 4
Hydraulic System Diagnosis Charts -----	Page 5
Cylinder Repair -----	Page 8
Valve Repair -----	Page 12

SPECIFICATIONS

<u>Pump</u>	<u>Circuits</u>	<u>Flow</u>	<u>Pressure</u>	<u>RPM</u>
Rear Section	Travel *PTO *Lift	8.8GPM	1500 PSI	3000
Front Section	*Backhoe Power Steering Loader Bucket	4.8GPM	1500 PSI	3000

* If equipped

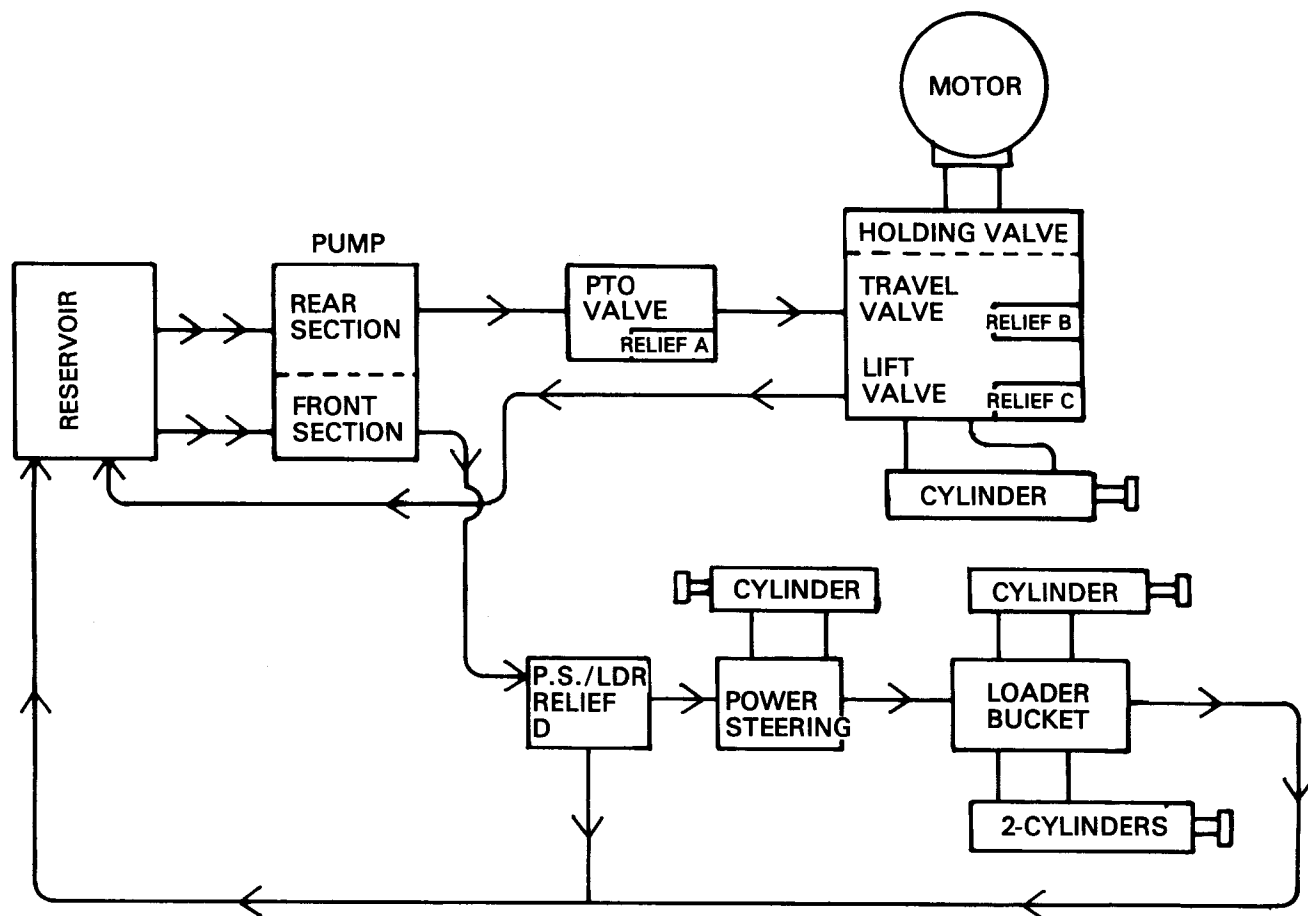
RELIEF VALVES

- A. Hydraulic PTO (if equipped) 2100 PSI
- B. Travel Circuit 2350 PSI
- C. Lift (3-Pt Hitch, if equipped) 1200 PSI
- D. Power Steering -- Loader Bucket (non-adjustable) 1500 PSI
- E. Backhoe, Model BH75WD 2000 PSI
 Model BH65BR 2400 PSI

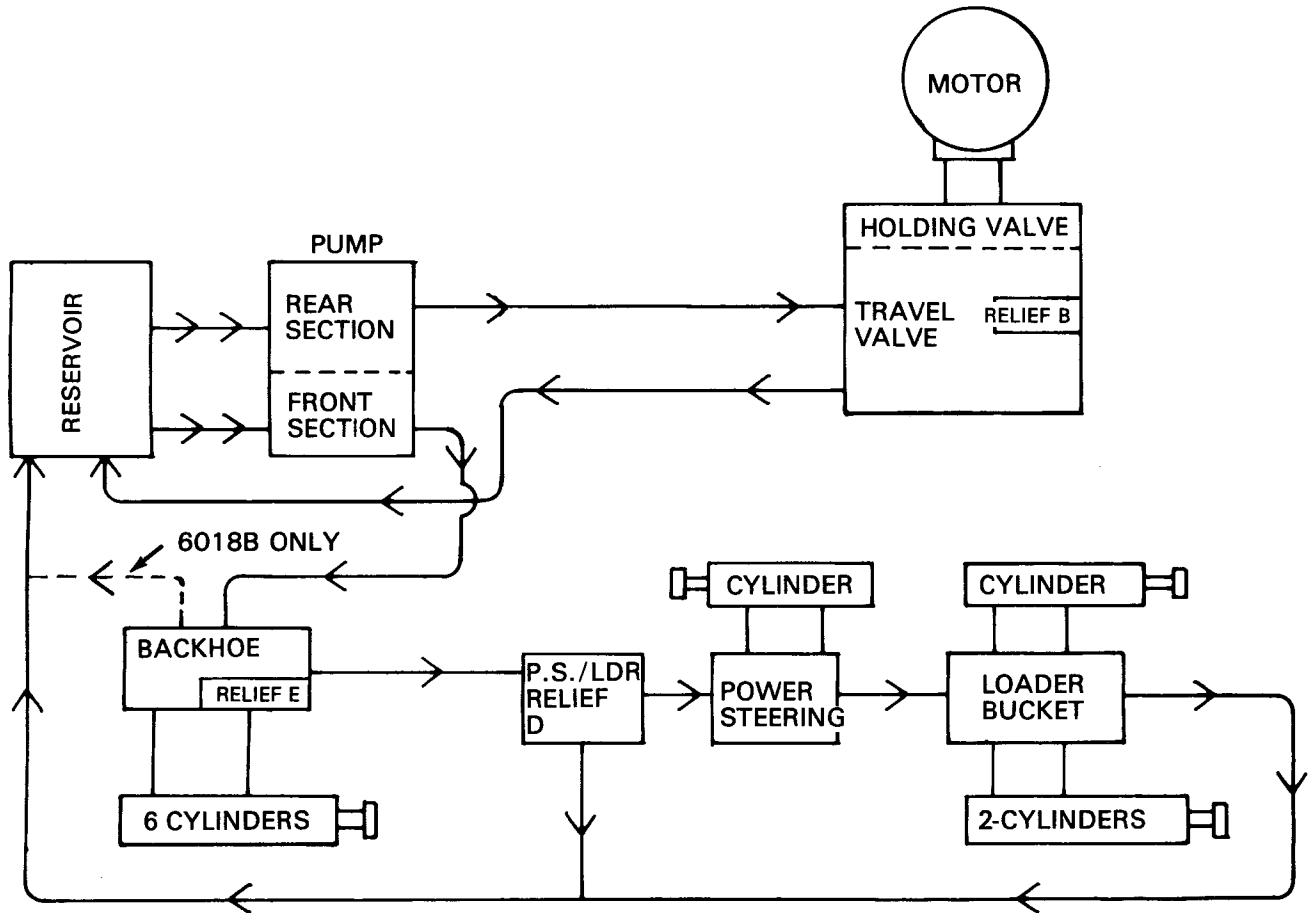
HYDRAULIC SYSTEM TESTING

Flowmeter testing of the Loader-Backhoe hydraulic system should be performed in accordance with the "Hydraulic Systems Test Procedures" Service Manual section. Hydraulic system diagnosis check sheets are included in this section to record test results.

6018 LOADER SHOWN WITH HYDRAULIC PTO AND OPTIONAL 3-POINT HITCH



6018 AND 6018B LOADER BACKHOE



HYDRAULIC SYSTEM DIAGNOSIS

PUMP REAR SECTION TRAVEL - PTO CIRCUIT

1. Oil temperature should be maintained between 120°F and 140°F (49°C-60°C) throughout the testing procedure.

2. Suction Line	3000 RPM @ 0 PSI (0 k Pa)	_____ GPM
	3600 RPM @ 0 PSI (0 k Pa)	_____ GPM
3. Pump Efficiency	600 PSI (4136 k Pa)	_____ GPM
(3000 RPM)	1500 PSI (10340 k Pa)	_____ GPM

CIRCUIT LEAKAGE TESTS (3000 RPM)

4. Drive Circuit Tests (Repeat for PTO if equipped)	Valve & Motor	Valve Only
A. Forward 1500 PSI (10340 k Pa)	_____ GPM	_____ GPM
B. Reverse 1500 PSI (10340 k Pa)	_____ GPM	_____ GPM
5. Hydraulic Attachment Lift Circuit Tests	Valve & Cylinder	Valve Only
A. Raise 600 PSI (4136 k Pa)	_____ GPM	_____ GPM
B. Lower 600 PSI (4136 k Pa)	_____ GPM	_____ GPM
6. Loader Lift Circuit Tests		n/a
7. Loader Bucket Circuit Tests		n/a
8. Main Relief Valve (3600 RPM) Cracking	_____ PSI	Full Open _____ PSI
9. Hydraulic Attachment Lift Relief Valve: (3600 RPM)	Cracking _____ PSI	Full Open _____ PSI

HYDRAULIC SYSTEM DIAGNOSIS

PUMP FRONT SECTION BACKHOE -- POWER STEERING -- LOADER BUCKET CIRCUITS

1. Oil temperature should be maintained between 120°F and 140°F (49°C-60°C) throughout the testing procedure.

2. Suction Line	3000 RPM @ 0 PSI (0 k Pa)	<u> </u>	GPM
	3600 RPM @ 0 PSI (0 k Pa)	<u> </u>	GPM
3. Pump Efficiency	600 PSI (4136 k Pa)	<u> </u>	GPM
(3000 RPM)	1500 PSI (10340 k Pa)	<u> </u>	GPM

CIRCUIT LEAKAGE TESTS (3000 RPM)

4. Drive Circuit Tests n/a
5. Hydraulic Attachment Lift Circuit Tests n/a
(See Backhoe Circuit Diagnosis Sheet)

6. Loader Lift Circuit Tests:

	Valve & Cylinders	Valve Only	Valve & 1 Cyl.
A. Raise 600 PSI (4136 k Pa)	<u> </u> GPM	<u> </u> GPM	<u> </u> GPM
B. Lower 600 PSI (4136 k Pa)	<u> </u> GPM	<u> </u> GPM	<u> </u> GPM

7. Loader Bucket Circuit Tests:	Valve & Cylinder	Valve Only
A. Roll Back @ 600 PSI (4136 k Pa)	<u> </u> GPM	<u> </u> GPM
B. Dump @ 600 PSI (4136 k Pa)	<u> </u> GPM	<u> </u> GPM

8. Main Relief Valve n/a

9. Backhoe Relief Valve: Cracking PSI Full Open PSI
(3600 RPM)

10. Power Steering -- Loader Cracking PSI Full Open PSI
Relief Valve: (3600 RPM)

HYDRAULIC SYSTEM DIAGNOSIS

BACKHOE CIRCUITS

(Use in conjunction with Backhoe-Power Steering-Loader Bucket Circuits Hydraulic System Diagnosis)

		VALVE & CYLINDER	VALVE ONLY	VALVE**
A. Boom	Raise	___ GPM (lmin)	___ GPM (lmin)	___ GPM(lmin)
	Lower	___ GPM (lmin)	___ GPM (lmin)	___ GPM(lmin)
B. Swing	Left	___ GPM (lmin)	___ GPM (lmin)	
	Right	___ GPM (lmin)	___ GPM (lmin)	
C. Left Stabilizer	Raise	___ GPM (lmin)	___ GPM (lmin)	
	Lower	___ GPM (lmin)	___ GPM (lmin)	
D. Right Stabilizer	Raise	___ GPM (lmin)	___ GPM (lmin)	
	Lower	___ GPM (lmin)	___ GPM (lmin)	
E. Dipper (Crowd)	In	___ GPM (lmin)	___ GPM (lmin)	___ GPM(lmin)
	Out	___ GPM (lmin)	___ GPM (lmin)	
F. Bucket	Load	___ GPM (lmin)	___ GPM (lmin)	
	Dump	___ GPM (lmin)	___ GPM (lmin)	

**Isolate circuit relief valve

Printed in U.S.A.