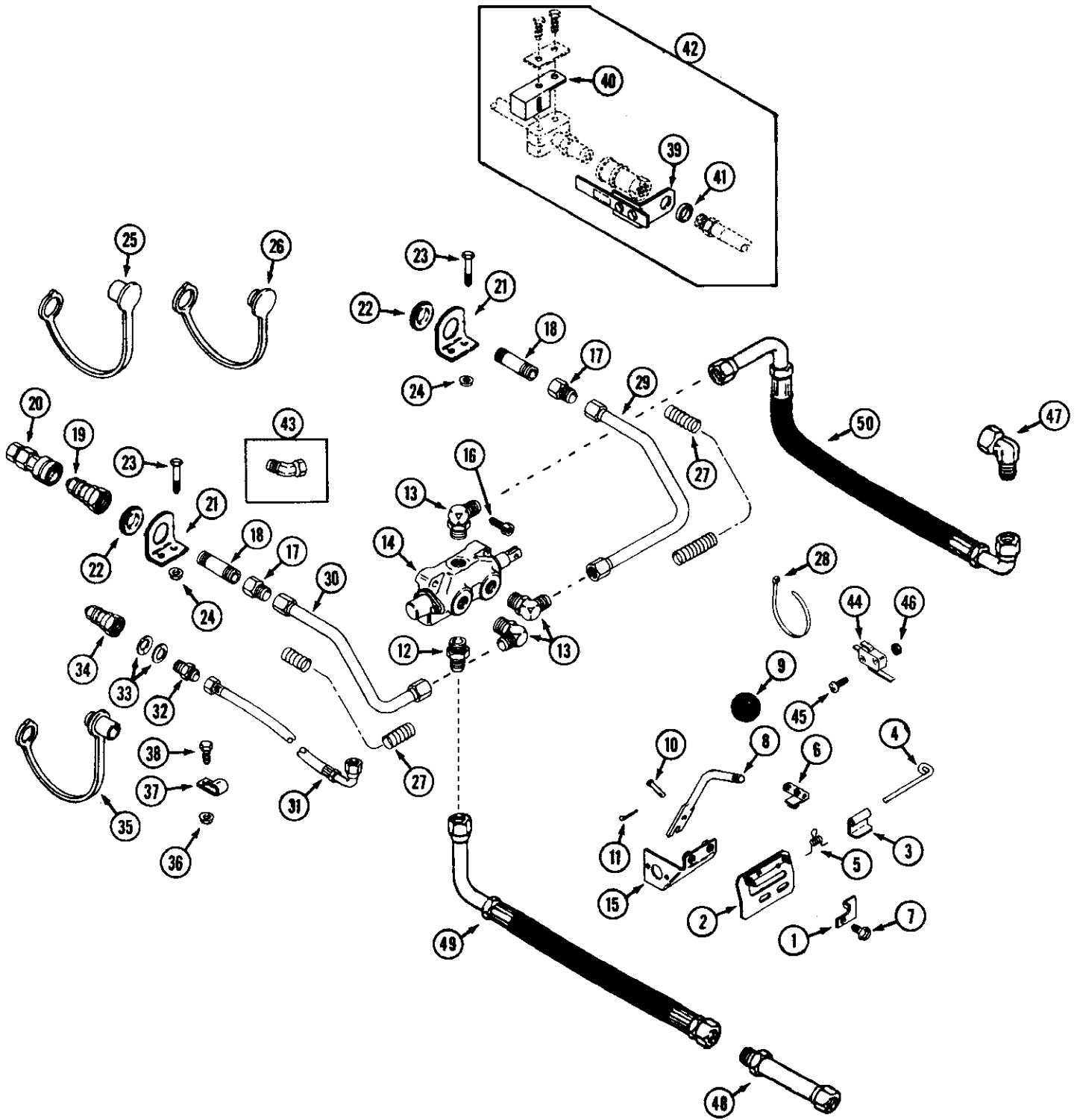


HP34A PTO KIT

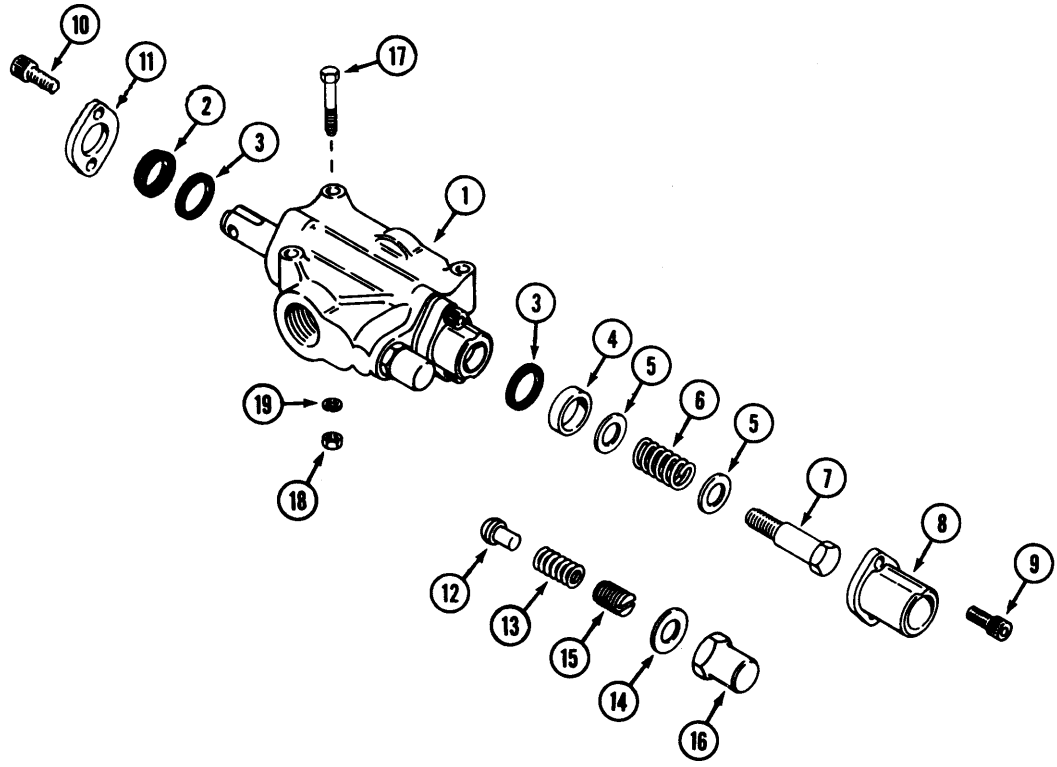


INDEX

HP34A HYDRAULIC PTO

REF.	PART NO.	DESCRIPTION	REQ'D
1	C42198	LATCH - reverse lockout	1
2	C42078	GATE - shift	1
3	C42081	STOP - lever	2
4	C42082	PIN - hinge.....	1
5	C42083	SPRING - torsion	1
6	C37400	ACTUATOR - switch.....	1
7	C29691	SCREW - 5/16" - 18 x 1".....	2
8	C44936	LEVER - PTO	1
9	C10487	KNOB.....	1
10	C28964	PIN - clevis 3/16" x 1"	2
11	132-329	PIN - cotter 1/16" x 3/4"	2
12	218-5062	FITTING - 7/8"	1
13	218-5107	FITTING - 90 7/8"	3
14	C30046	VALVE - PTO (repairs page 73)	1
15	C37401	BRACKET - actuating.....	1
16	61-420	SCREW - 1/4" - 20 x 1-1/4" socket head.....	2
17	218-465	FITTING - 1/2" x 7/8" - 14	2
18	C37142	NIPPLE - pipe	2
19	C37187	COUPLING - quick, male 7/8"	2
20	C37188	COUPLING - quick, female 7/8"	1
21	C47002	BRACKET – Fitting mounting	2
22	C47000	GROMMET	2
23	113-3	BOLT - 1/4" - 20 x 3/4"	4
24	131-934	NUT - 1/4" - 20 flange lock	4
25	C40641	CAP - dust	1
26	C40642	PLUG - dust.....	1
27	C37454	CONDUIT - corrugated (cut to length).....	2
28	C22947	TIE - nylon	4
29	C37233	TUBE - L.H	1
30	C37234	TUBE - R.H.....	1
31	C44939	HOSE - hydraulic 44".....	1
32	218-443	FITTING - 3/8" x 1/4"	1
33	C37249	WASHER - spring	2
34	C41043	COUPLING - quick, male 9/16"	1
35	C33404	CAP - dust	1
36	131-934	NUT - 1/4" - 20 flange lock	1
37	C32455	CLIP - "J"	1
38	187-1036	SCREW - 1/4" - 20 x 1/2" self-tap.....	1
39	C37439	KEY - coupling switch	1
	C37440	DECAL	1
	113-1	BOLT - 1/4" - 20.....	2
	195-518	WASHER - 1/4"	2
40	C37437	BRACKET - switch mounting.....	1
41	C37459	CUSHION - key	1
42	C42048	KIT - coupler switch (optional)	1
43	217-1086	FITTING - 450 (3018PS)	2
44	C37399	SWITCH - interlock.....	2
45	C33696	SCREW - #4 - 40 x 1-1/8".....	2
46	C33697	NUT - #4 - 40	2
	C37435	HARNESS - wire, PTO switches	1
	C37275	DECAL - "ON-OFF"	1
47	218-5232	FITTING – 90 Degree	1
48	C46997	TUBE – To flow divider – PS units	1
49	C46998	HOSE – Pump to PTO "IN" (3000 Series).....	1
49	C46999	HOSE – Pump to PTO "IN" (4000 Series).....	1
50	C46995	HOSE – PTO "OUT" to Travel Valve "IN" (3000 Series)	1
50	C46996	HOSE – PTO "OUT" to Travel Valve "IN" (4000 Series)	1

INDEX



PTO VALVE

INDEX

1	C30046	VALVE - hydraulic	1
2	C26706	WIPER - spool	1
3	C26707	RING - quad	2
4	C26722	SPACER - end cap	1
5	195-526	WASHER	2
6	C26724	SPRING - centering	1
7	C26725	BOLT - shoulder	1
8	C26726	BONNET - end cap	1
9	165-143	SCREW - 1/4" - 20 x 3/4" socket head	2
10	165-142	SCREW - 1/4" - 20 x 5/8" socket head	2
11	C26727	RETAINER - seal	1
12	C26708	POPPET - relief	1
13	C26709	SPRING - relief	1
14	C26710	WASHER - aluminum, seal	1
15	C26711	SCREW - adjustment, relief	1
16	C26712	NUT - cap, relief	1
17	113-5	BOLT - 1/4" x 1-1/2"	3
18	129-101	NUT - 1/4"	3
19	192-19	LOCKWASHER - 1/4"	3