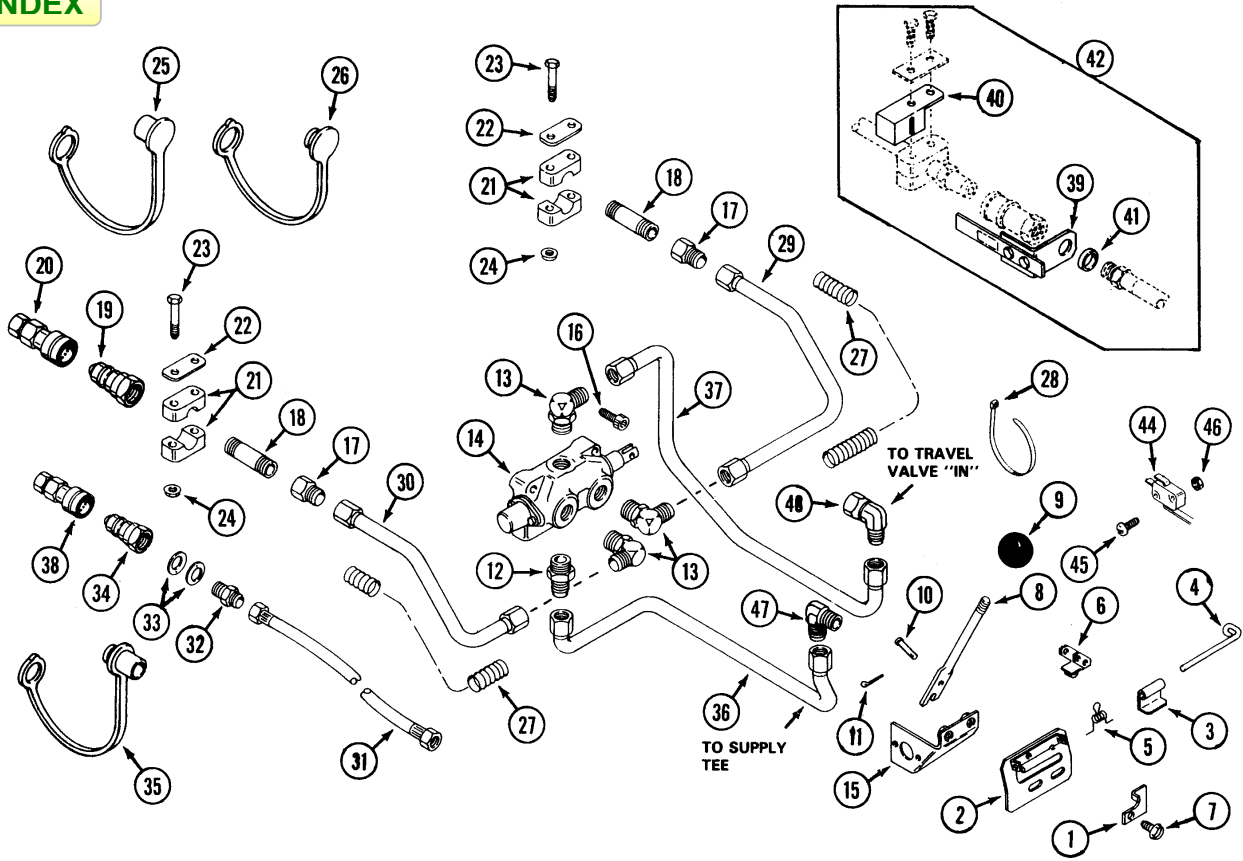


INDEX



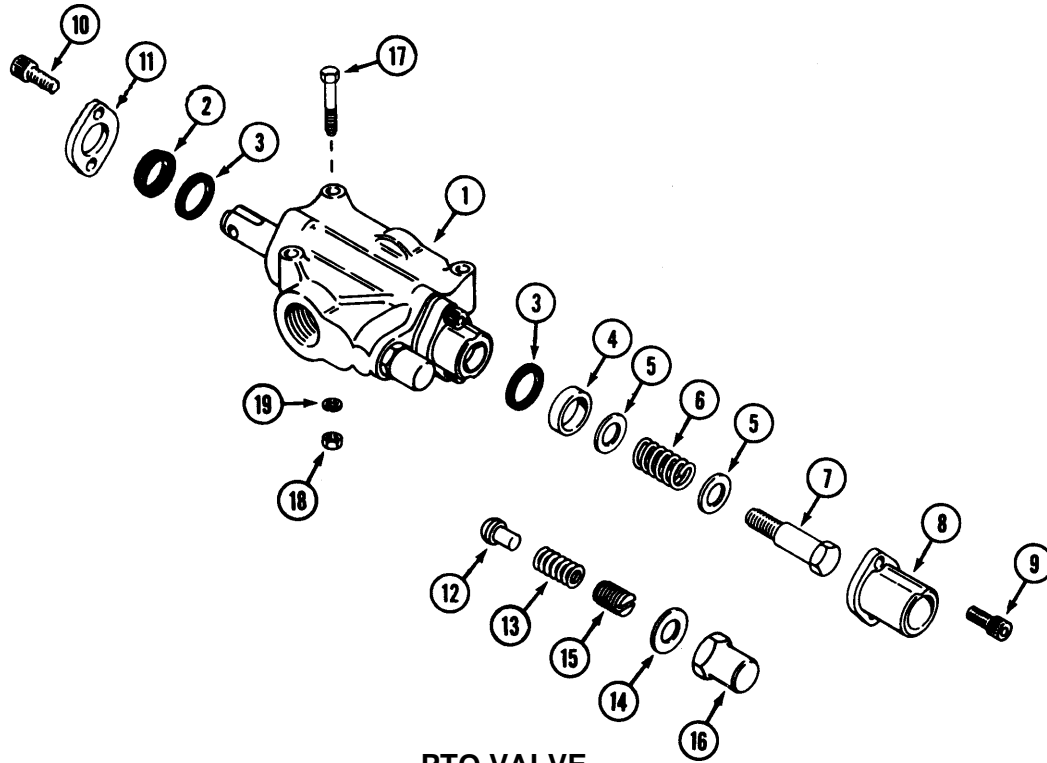
MODEL 3012, 3014, 3016 AND 4016 COMPACT TRACTORS

HP32 HYDRAULIC PTO (3012, 3014, 3016)

HP42 HYDRAULIC P10 (4016)

REF.	PART NO.	DESCRIPTION	REQ'D
1	C42198	LATCH - reverse lockout.....	1
2	C42078	GATE - shift.....	1
3	C42081	STOP - lever	2
4	C42082	PIN - hinge	1
5	C42083	SPRING - torsion	1
6	C37400	ACTUATOR - switch	1
7	C29629	SCREW - 5/16" - 18 x 3/4"	2
8	C37406	LEVER - PTO.....	1
9	C10487	KNOB.....	1
10	C28964	PIN - clevis 3/16" x 1".....	2
11	132-329	PIN - cotter 1/16" x 3/4".....	2
12	218-5062	FITTING - 7/8".....	1
13	218-5107	FITTING - 90° 7/8".....	3
14	C30046	VALVE - PTO (repairs page).....	1
15	C37401	BRACKET - actuating	1
16	61-420	SCREW - 1/4" - 20 x 1-1/4" socket head	2
17	218-465	FITTING - 1/2" x 7/8" - 14.....	2
18	C37142	NIPPLE - pipe	2
19	C37187	COUPLING - quick, male 7/8".....	2
20	C37188	COUPLING - quick, female 7/8".....	1
21	C37144	CLAMP.....	4
22	C37145	COVER - clamp.....	2
23	113-14	BOLT - 1/4" - 20 x 2".....	4
24	131-934	NUT - 1/4" - 20 flange lock.....	4
25	C40641	CAP - dust.....	1
26	C40642	PLUG - dust	1
27	C37454	CONDUIT - corrugated (cut to length)	2
28	C22947	TIE - nylon.....	4
29	C37233	TUBE - L.H.....	1
30	C37234	TUBE - R.H.....	1
31	C33750	HOSE - hydraulic 21" (3012, 3014, 3016).....	1
31	C33560	HOSE - hydraulic 23" (4016).....	1
32	218-443	FITTING - 3/8" x 1/4".....	1
33	C37249	WASHER - spring	2
34	C41043	COUPLING - quick, male 9/16".....	1
35	C33404	CAP - dust.....	1
36	C40670	TUBE - pump to P.T.O. "in" (3012, 3014, 3016)	1
36	C40671	TUBE - pump to P.T.O. "in" (4016)	1
37	C40672	TUBE - travel valve to P.T.O. "out" (3012, 3014, 3016).....	1
37	C40673	TUBE - travel valve to P.T.O. "out" (4016).....	1
38	C41044	COUPLING - quick, female 9/16".....	1
39	C37439	KEY - coupling switch	1
	C37440	DECAL.....	1
	113-1	BOLT - 1/4" -20.....	2
	195-518	WASHER - 1/4".....	2
40	C37437	BRACKET - switch mounting	1
41	C37459	CUSHION - key.....	1
42	C42048	KIT - coupler switch.....	1
43	217-1086	FITTING - 45° (HP32)	2
44	C37399	SWITCH - interlock	2
45	C33696	SCREW - #4 - 40 x 1-1/8"	2
46	C33697	NUT - #4 - 40	2
47	218-475	FITTING - 90° 7/8" x 7/8" male	1
48	218-5232	FITTING - 90° 7/8" male x 7/8" female.....	1
	C37435	HARNESS - wire, PTO switches.....	1

INDEX



PTO VALVE

INDEX

1	C30046	VALVE - hydraulic	1
2	C26706	WIPER - spool.....	1
3	C26707	RING - quad	2
4	C26722	SPACER - end cap.....	1
5	195-526	WASHER	2
6	C26724	SPRING - centering.....	1
7	C26725	BOLT - shoulder	1
8	C26726	BONNET - end cap	1
9	165-143	SCREW - 1/4" - 20 x 3/4" socket head	2
10	165-142	SCREW - 1/4" - 20 x 5/8" socket head	2
11	C26727	RETAINER - seal	1
12	C26708	POPPET - relief.....	1
13	C26709	SPRING - relief.....	1
14	C26710	WASHER - aluminum, seal	1
15	C26711	SCREW - adjustment, relief	1
16	C26712	NUT - cap, relief	1
17	113-5	BOLT - 1/4" x 1-1/2"	3
18	129-101	NUT - 1/4"	3
19	192-19	LOCKWASHER - 1/4"	3